

*For more information, contact:*

Brady Clements

Office: 317-884-1100

Cell: 317-459-0466

Email:

[brady@horizonproperty.org](mailto:brady@horizonproperty.org)

**PRIME RETAIL SPACE ALONG A MAJOR SHOPPING THOROUGHFARE**

Greenwood Corner Shops is located just north of the Greenwood Park Mall, a super-regional mall owned by Simon Property Group. A busy shopping district south of Indianapolis, Indiana, this area boasts a daily traffic count of over 35,000. This market has over 150,000 trade area households with a median income in excess of \$62,000.

Current tenants of the Greenwood Corners Shops include a physical therapy center, CitiFinancial, Sylvan Learning Center, a blood

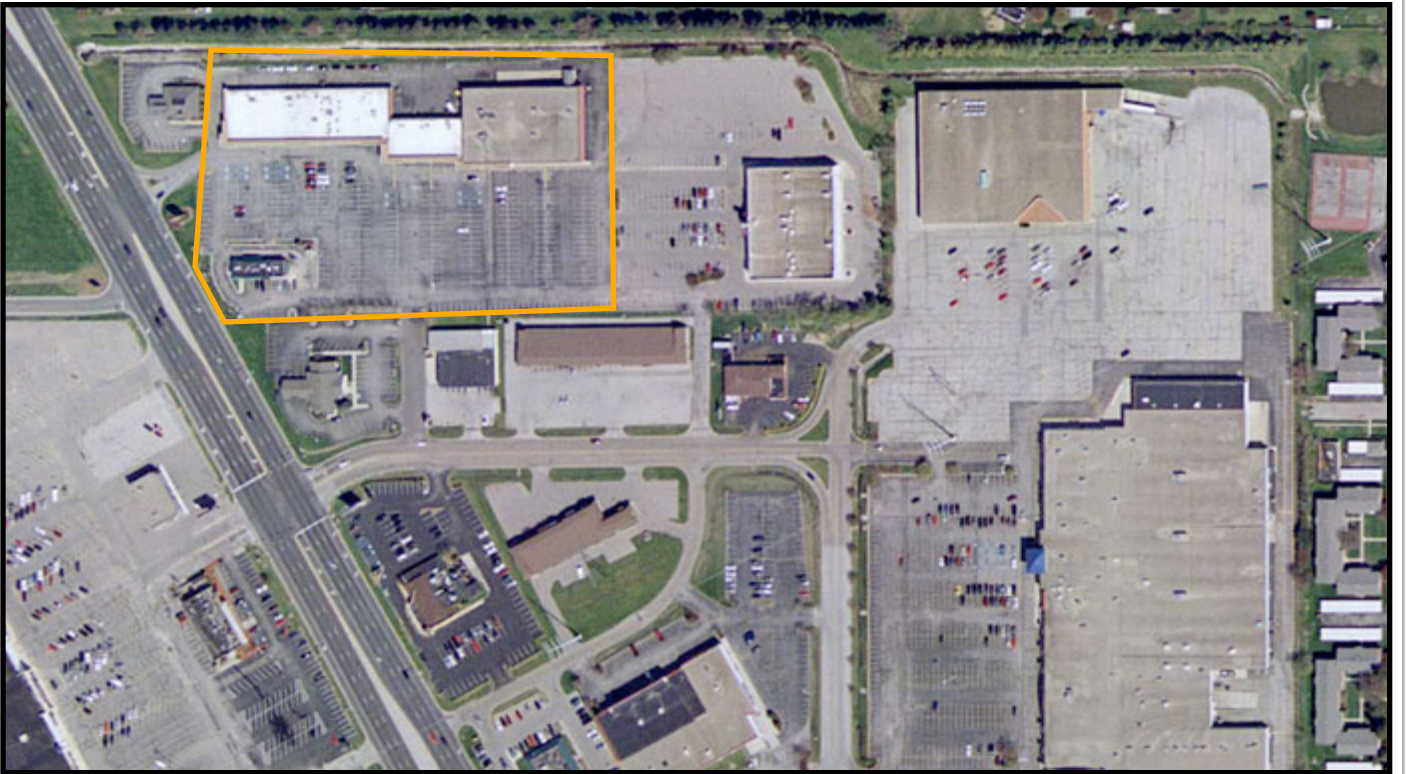
center, a Japanese steakhouse, a deli and a Paul Mitchell beauty school.

This property has ample parking, is immaculately maintained and has local ownership.

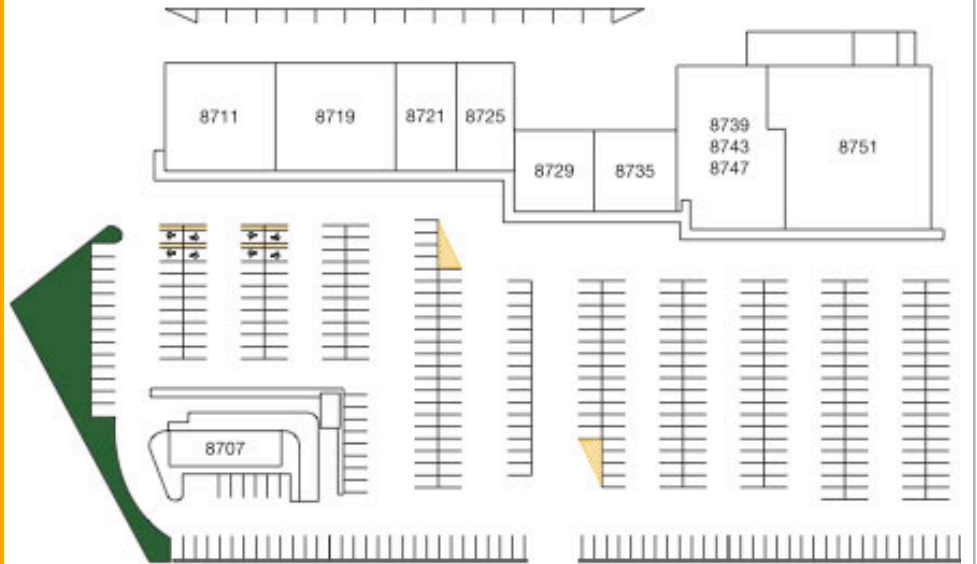
✓ **2,400 to 9,500 SF now available**

✓ **Easy in and out on busy, major north/ south highway.**

✓ **Great mix of tenants**



Greenwood Corner Shops



**OUR CURRENT TENANTS INCLUDE:**

*For more information, contact:*  
 Brady Clements  
*Office:* 317-884-1100  
*Cell:* 317-459-0466  
*Email:*  
 brady@horizonproperty.org

- |                                     |                                |
|-------------------------------------|--------------------------------|
| 8711: Center for Orthopedic Surgery | 8735: Ricci's Deli             |
| 8719: Kabuto Japanese Steakhouse    | 8739: AVAILABLE (3,640 SF)     |
| 8721 Citifinancial                  | 8743: AVAILABLE (3,640 SF)     |
| 8725: Central Indiana Blood Center  | 8747: AVAILABLE (2,200 SF)     |
| 8729: Sylvan Learning Center        | 8751: Paul Mitchell The School |