



For more information, contact:

Brady Clements

Office: 317-884-1100

Cell: 317-459-0466

Email:

brady@horizonproperty.org

NEW UPSCALE SPACE SOUTH OF GREENWOOD PARK MALL

Charter Crossing is located on the south side of the Greenwood Park mall, a super-regional mall owned by Simon Property Group. A recent expansion to the mall property, along with over 120 retail stores within the mall brings heavy shopping traffic to the area.

Our new, upscale center is adjacent to a 14-screen AMC Theater and has easy access from the mall ring road. In addition, the center can be entered directly from Fry Road via a newly approved spotlight.

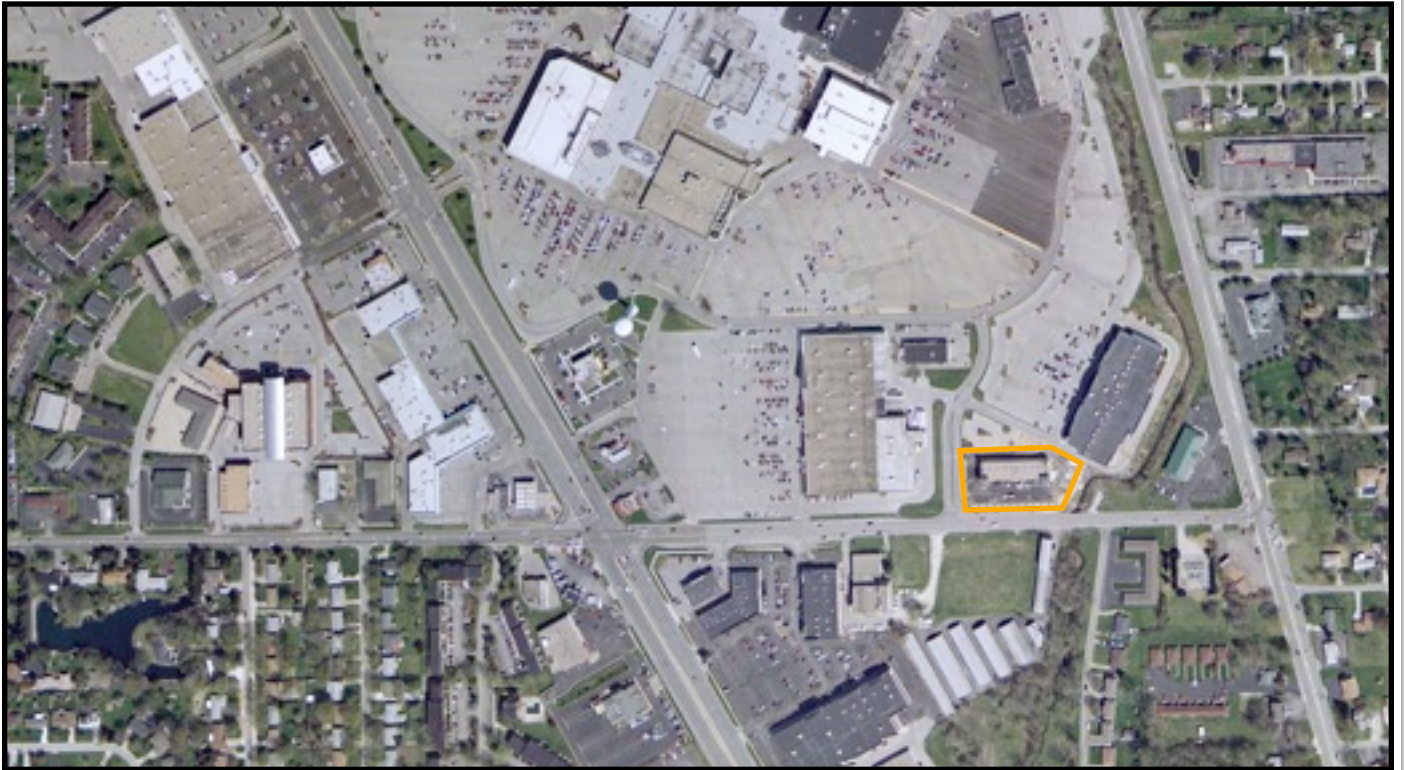
Current tenants include Fannie May Confections and Rae Lynn's Formal Wear.

Highly visible signage is available on the towers (east and west) fronting Fry Road and the mall.

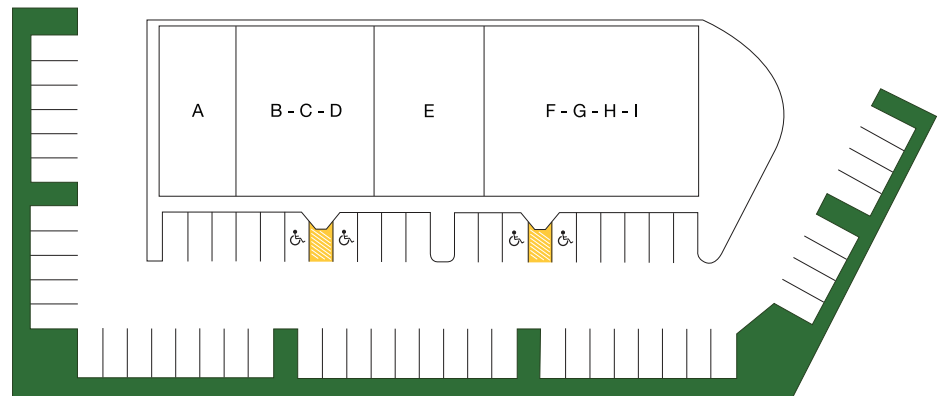
✓ **1,220- 4,880 square feet available**

✓ **Daily traffic counts of 41,890**

✓ **All new construction with upscale architecture**



Charter Crossing



For more information, contact:

Brady Clements

Office: 317-884-1100

Cell: 317-459-0466

Email:

brady@horizonproperty.org

OUR CURRENT TENANTS INCLUDE:

A: Fannie May Confections

B-C-D: AVAILABLE (3,355 SF)

E: Rae Lynn's Formal Wear

F-G-H-I: AVAILABLE (4,880 SF)